



# Iso Analytics, Inc.

6135 NW 167 Street  
Suite E 15  
Miami Lakes, FL 33015  
(954) 378-2517



**ISO ANALYTICS** testing@isoanalytics.com

# Analysis Report

**Client** Mellow Fellow

**Batch #** 22157204041753

**Test Reg State** Florida

**Batch Date** 6/9/2022

**Production Facility** DelCann Oils

**Extracted from** Hemp

**Production Date** 6/9/2022

**Sample Name** 500MG Edible- HHC - Sour Watermelon

**Order Date** 6/9/2022

**Sample Type** Ingestible

**Date Received** 6/10/2022

**Sample ID** IA-68260

**Lab Batch Date** 6/10/2022

**Date Completed** 6/11/2022

### Potency Summary

<b>Total Delta 8</b> 1.830	<b>Total THC</b> None Detected
<b>Total Delta 9</b> None Detected	<b>Total Delta 10</b> None Detected
<b>Total HHC</b> 513.000	<b>Total CBD</b> None Detected
<b>Total THCO</b> None Detected	<b>Total Cannabinoids</b> 515.830



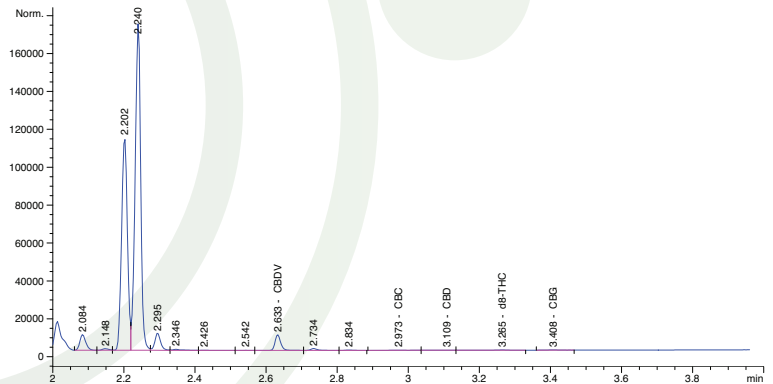
**Product Image**

### Cannabinoid Profile Tested by GC/FID

#### Potency 12 Test

Analyte	LOD %	LOQ %	Result (mg/g)	Result (%)
Δ8-THC	0.000	0.001	1.830	0.048
Δ9-THC	0.000	0.001	0.000	<LOQ
Δ10-THC	0.000	0.001	0.000	<LOQ
Δ8-THCO	0.000	0.001	0.000	<LOQ
HHC	0.000	0.001	513.000	13.429
CBC	0.000	0.001	0.000	<LOQ
CBD	0.000	0.001	0.000	<LOQ
THCV	0.000	0.001	0.000	<LOQ
THCA-A	0.000	0.001	0.000	<LOQ
CBN	0.000	0.001	0.000	<LOQ
CBGA	0.000	0.001	0.000	<LOQ
CBG	0.000	0.001	0.000	<LOQ
CBDV	0.000	0.001	0.000	<LOQ
CBDA	0.000	0.001	0.000	<LOQ

#### Chromatogram



ND = Not Detected; NT = Not Tested; LOD = Limit of Detection;  
LOQ = Limit of Quantitation; RL = Reporting Limit; Δ = Delta;  
Total Δ9-THC = Δ9-THCA \* 0.877 + Δ9-THC; Total CBD = CBDA \* 0.877 + CBD

## ISO ANALYTICS, INC.

This sample has been tested by Iso Analytics, Inc. using valid testing methodologies and a quality system. Values reported relate only to the sample tested. Iso Analytics, Inc. makes no claims as to the efficacy, safety or other risks associated with any detected or non-detected levels of any compounds reported herein. This Report shall not be reproduced except in full, without the written approval of Iso Analytics, Inc.

Charles Louis, PhD  
Chief Scientist  
Iso Analytics, Inc.